

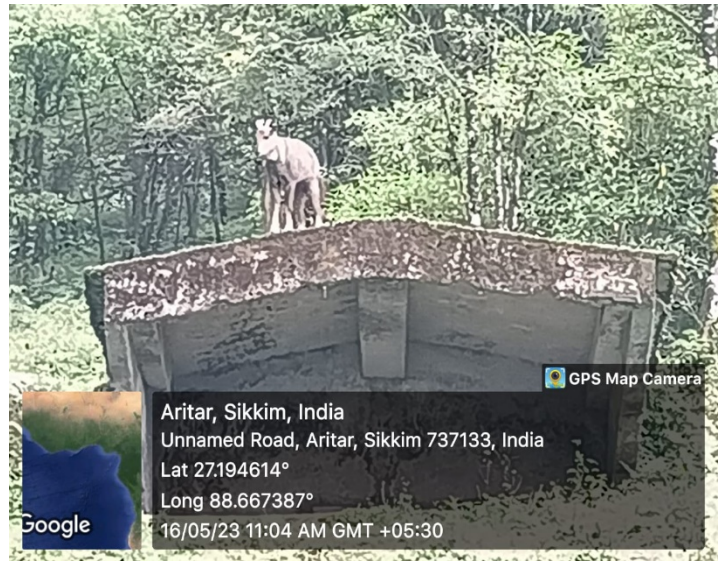
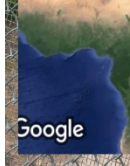
2.3.1 Student centric methods, such as experiential learning, participative learning and problem-solving methodologies are used for enhancing learning experiences (supportive document)

STUDY TOUR WITH UG SEMESTER IV HONOURS STUDENTS CONDUCTED BY POST GRADUATE DEPARTMENT OF ZOOLOGY AT EAST SIKKIM AND ADJOINING AREAS





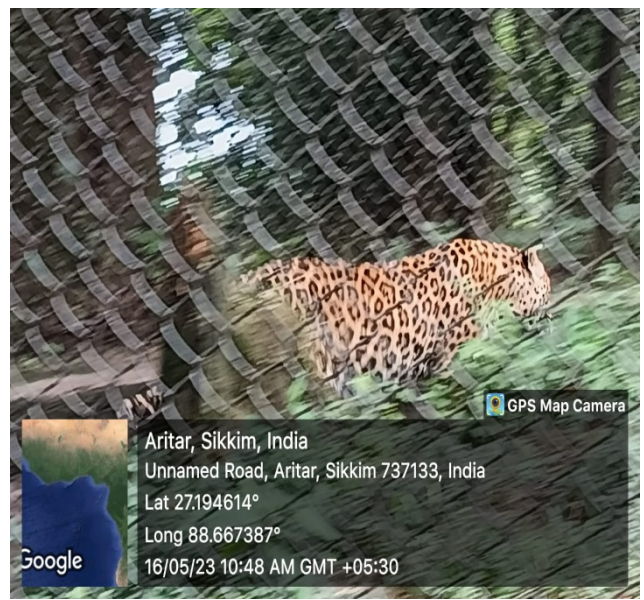
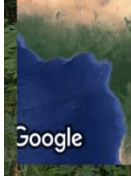
Aritar, Sikkim, India
 Unnamed Road, Aritar, Sikkim 737133, India
 Lat 27.194614°
 Long 88.667387°
 16/05/23 10:35 AM GMT +05:30



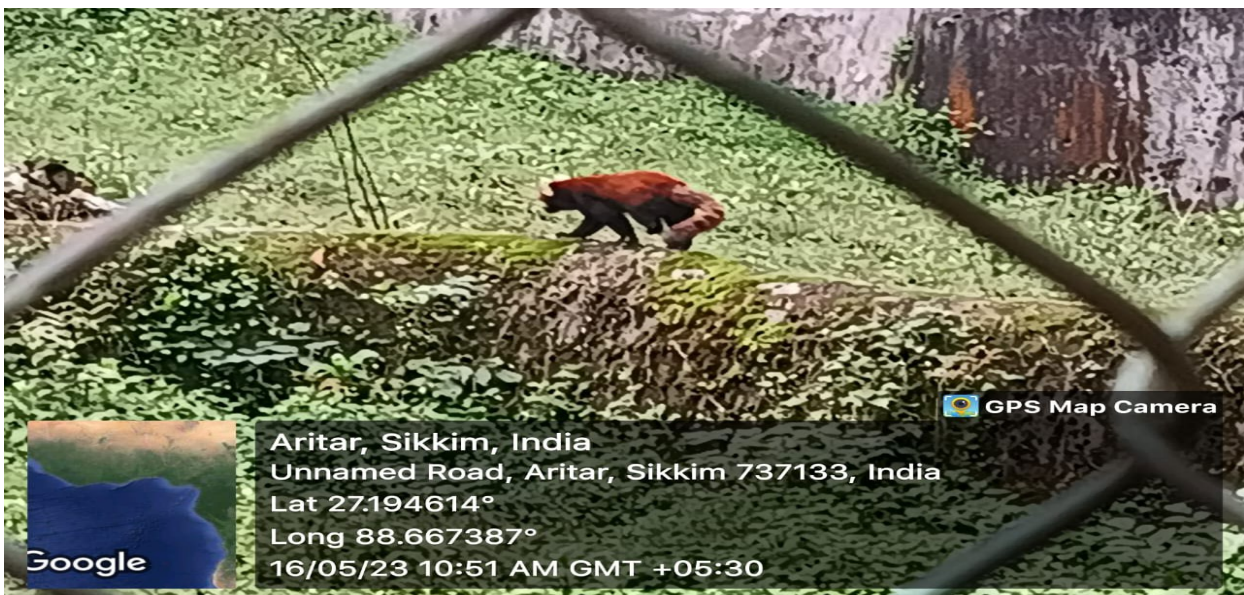
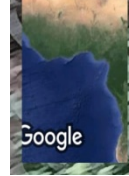
Aritar, Sikkim, India
 Unnamed Road, Aritar, Sikkim 737133, India
 Lat 27.194614°
 Long 88.667387°
 16/05/23 11:04 AM GMT +05:30



Aritar, Sikkim, India
 Unnamed Road, Aritar, Sikkim 737133, India
 Lat 27.194614°
 Long 88.667387°
 16/05/23 10:47 AM GMT +05:30



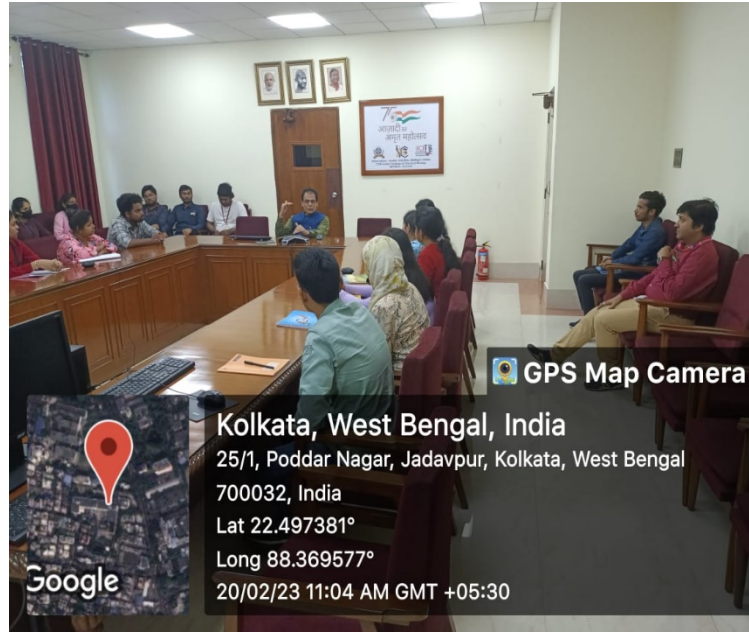
Aritar, Sikkim, India
 Unnamed Road, Aritar, Sikkim 737133, India
 Lat 27.194614°
 Long 88.667387°
 16/05/23 10:48 AM GMT +05:30



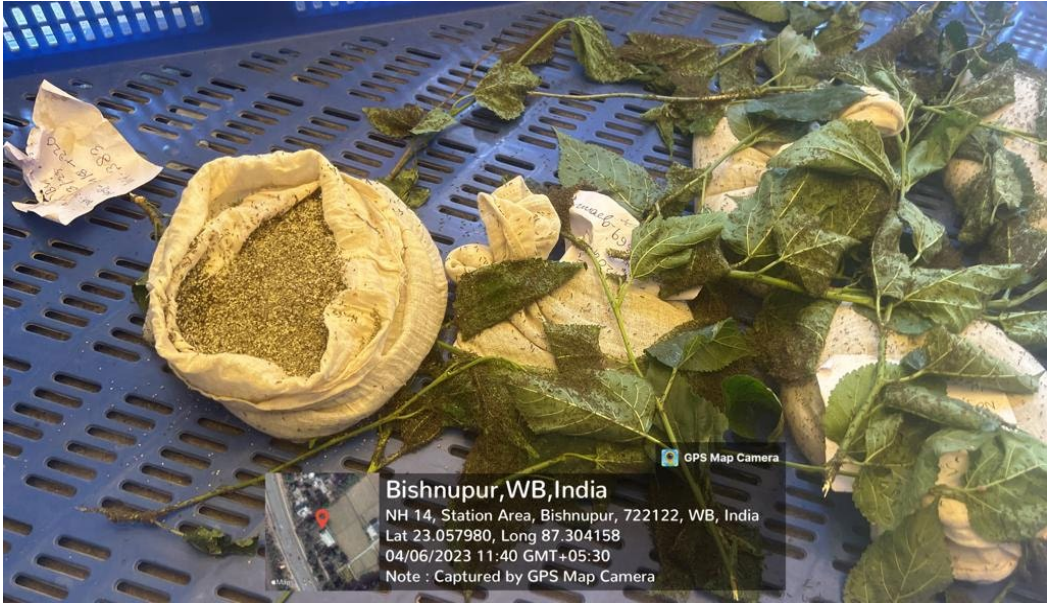
Aritar, Sikkim, India
 Unnamed Road, Aritar, Sikkim 737133, India
 Lat 27.194614°
 Long 88.667387°
 16/05/23 10:51 AM GMT +05:30



**RESEARCH LABORATORY VISIT WITH UG SEMESTER V HONOURS
STUDENTS CONDUCTED BY POST GRADUATE DEPARTMENT OF
ZOOLOGY AT INDIAN INSTITUTE OF CHEMICAL BIOLOGY, KOLKATA**



SERICULTURE FARM VISIT WITH UG SEMESTER VI HONOURS STUDENTS CONDUCTED BY POST GRADUATE DEPARTMENT OF ZOOLOGY AT BISNUPUR, BANKURA



COMMUNITY OUTREACH PROGRAM WITH PG 1ST SEMESTER STUDENTS CONDUCTED BY POST GRADUATE DEPARTMENT OF ZOOLOGY AT NABOJAMDOBA, ASANSOL



STUDY TOUR CONDUCTED BY DEPARTMENT OF BOTANY AT DARJEELING AND ADJOINING AREAS



FIELD TRIP CONDUCTED BY DEPARTMENT OF BOTANY AT MOHISILA AND ADJOINING AREAS FOR PRACTICAL STUDY OF THE PAPER ENTITLED MYCOLOGY AND PHYTOPATHOLOGY



FIELD TRIP CONDUCTED BY DEPARTMENT OF BOTANY AT TOPCHANCHI



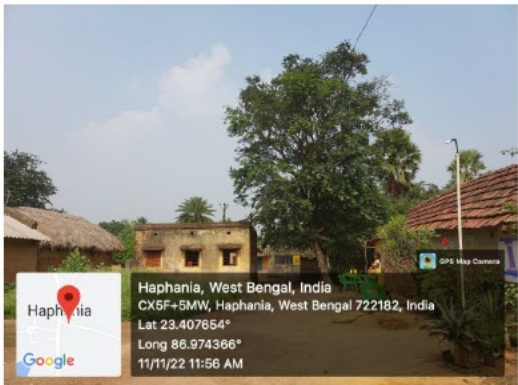
STUDY TOUR CONDUCTED BY DEPARTMENT OF GEOGRAPHY (HINDI SHIFT) AT SUSUNIA HILL



STUDY TOUR RELATED TO DRINKING WATER AND SANITATION CONDUCTED BY DEPARTMENT OF GEOGRAPHY (HINDI SHIFT)



STUDY AT PRIMARY SCHOOL AT HAPANIA CONDUCTED BY DEPARTMENT OF GEOGRAPHY (HINDI SHIFT)



PRIMARY SURVEY ON ROAD PATTERN AND ROAD CONDITION CONDUCTED BY DEPARTMENT OF GEOGRAPHY (HINDI SHIFT)



STUDY TOUR RELATED TO SOURCES OF ECONOMY CONDUCTED BY DEPARTMENT OF GEOGRAPHY (HINDI SHIFT)



Interdisciplinary excursion and field study with 3rd Semester students conducted by Beagle, Nature club, BB College

